

Anti-BCMA hlgG1 Antibody(Belantamab)

Product information

GM-52396AB-10	10 µg
GM-52396AB-100	100 µg
GM-52396AB-1000	1 mg

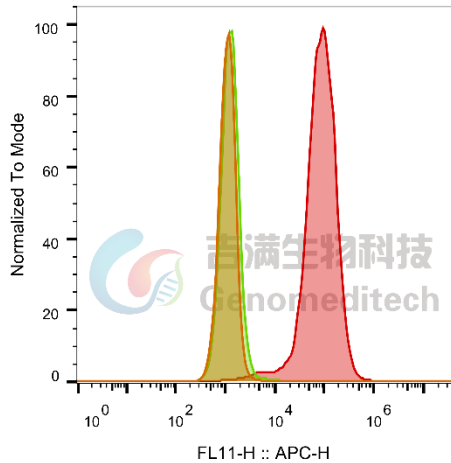
Antibody Information

Species Reactivity	Human
Clone	Belantamab
Source/Isotype	Monoclonal human IgG1, κ
Application	Flow cytometry; Block-Assay
Specificity	Detects BCMA
Gene	BCMA
Other Names	BCM, TNFRSF17, CD269, TNFRSF13A
Gene ID	608(human)
Background	B-cell maturation antigen (BCMA or BCM), also known as tumor necrosis factor receptor superfamily member 17 (TNFRSF17), is a cell surface receptor of the TNF receptor superfamily which recognizes B-cell activating factor (BAFF). BCMA contains one TNFR-Cys repeat. TNFRSF17 is expressed in mature B-cells, but not in T-cells or monocytes. Serum B-cell maturation antigen (sBCMA) is the cleaved form of BCMA, found at low levels in the serum of normal patients and generally elevated in patients with multiple myeloma (MM). BCMA promotes B-cell survival and plays a role in the regulation of humoral immunity. BCMA can lead to NF-kappaB and MAPK8/JNK activation.
Storage	Store at 2-8°C short term (1-2 weeks).Store at ≤ -20°C long term. Avoid repeated freeze-thaw.
Formulation	Phosphate-buffered solution, pH 7.2.
Endotoxin	< 1 EU/mg, determined by LAL gel clotting assay

Data Examples

Flow cytometry

The recommended usage range is 0.5-4 µg per test. H_BCMA HEK-293 Cell Line (Catalog # GM-C24896) was stained with Anti-BCMA hlgG1 Antibody (Catalog # GM-52396AB) or isotype control antibody, followed by anti-Human IgG APC-conjugated Secondary Antibody.

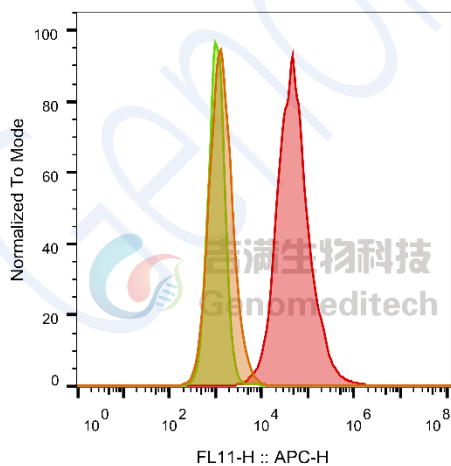


SampleID	Geometric Mean : FL11-H
HEK-293 anti-BCMA+APC-2nd Ab	1115
HEK-293 H_BCMA H_IgG+APC-2nd Ab	1281
HEK-293 H_BCMA anti-BCMA+APC-2nd Ab	80771

Fig. FACS

Flow cytometry

The recommended usage range is 0.5-4 µg per test. H_BCMA CHO-K1 Cell Line (Catalog # GM-C24849) was stained with Anti-BCMA hlgG1 Antibody (Catalog # GM-52396AB) or isotype control antibody, followed by anti-Human IgG APC-conjugated Secondary Antibody.



SampleID	Geometric Mean : FL11-H
CHO-K1 anti-BCMA+APC-2nd Ab	1358
CHO-K1 H_BCMA H_IgG+APC-2nd Ab	1099
CHO-K1 H_BCMA anti-BCMA+APC-2nd Ab	49434

Fig. FACS

Block assay

Anti-BCMA hlgG1 Antibody (Catalog #GM-52396AB) inhibits H_BCMA Reporter Cell Line (Catalog # GM-C25349) Luminescence induced by BAFF. IC50 for this effect is 0.06294 µg/mL.

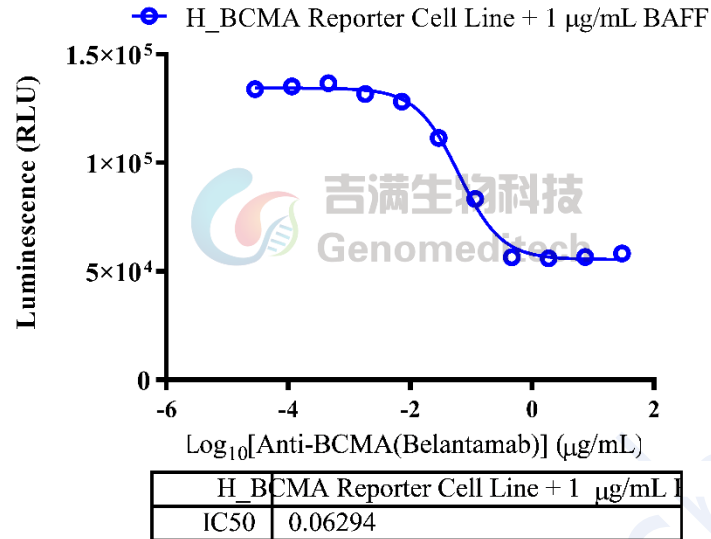


Fig. Assay